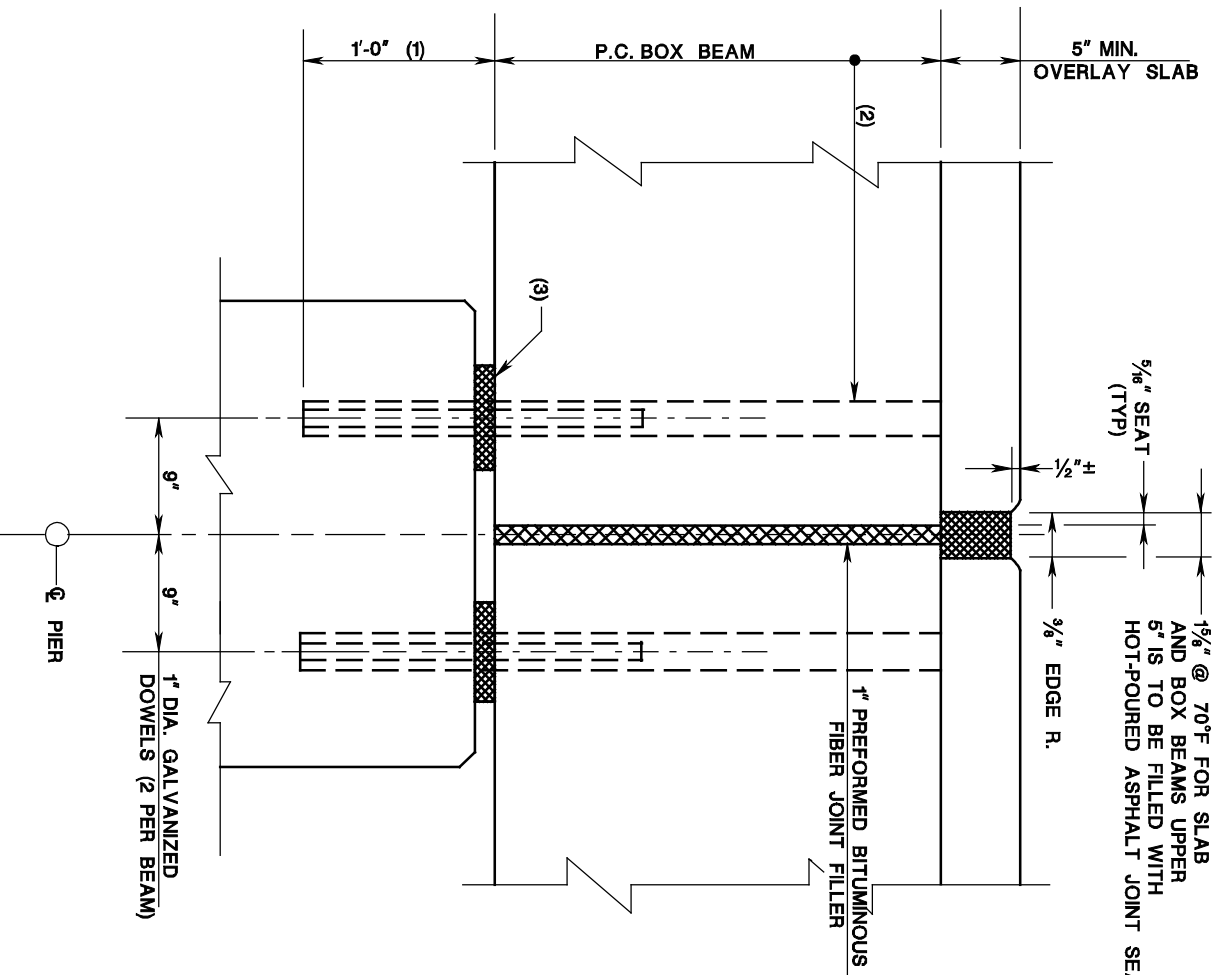


PLATE
3.10-6



1. 2" DIA. HOLES IN ABUTMENT SEAT TO BE DRILLED OR CORED AFTER BEAMS ARE ERECTED AND THE RODS TIGHTENED. FILL WITH NON-SHRINK GROUT.
2. FILL WITH MASTIC OR HOT-POURED RUBBER ASPHALT JOINT SEALER AT EXPANSION END. FILL WITH NON-SHRINK GROUT OR LOW MODULUS EPOXY MORTAR AT FIXED END.
3. FOR ELASTOMERIC BEARING PAD SEE PLATE 3.10-9.